

# MONTHLY MEMBERSHIP PROGRESS REPORT

District 5 SE

Results as of: 3/31/2026

GMT:

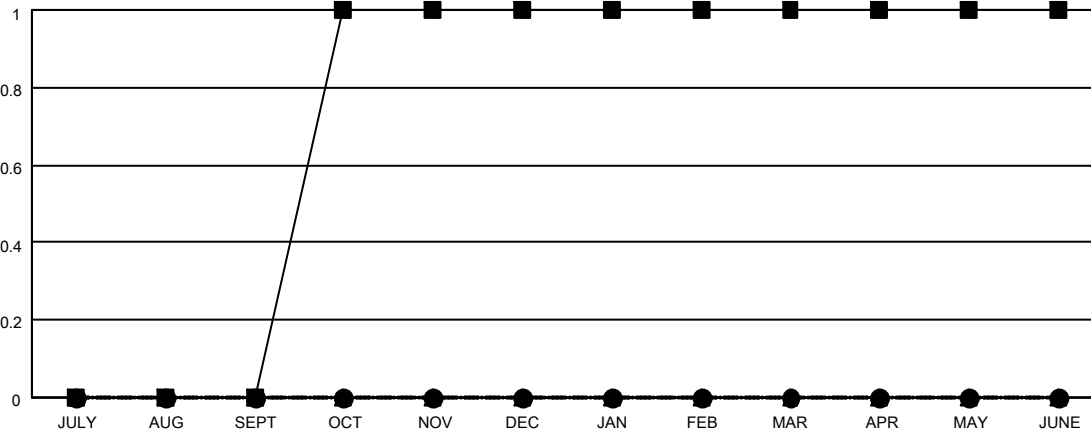
LOCATION SOUTH DAKOTA

GMT CA

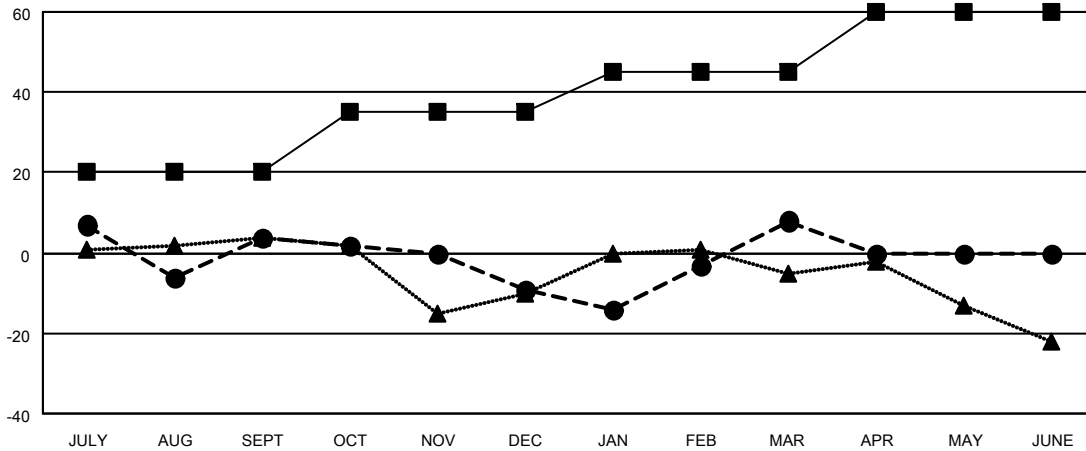
Clubs			
RESULTS FOR 2025-2026			
QUARTER	NEW CLUB GOAL	NEW CLUBS	DROPPED CLUBS
JULY/AUG/SEPT	0	0	0
OCT/NOV/DEC	1	0	0
JAN/FEB/MAR	0	0	0
APR/MAY/JUNE	0	0	0

Members			
RESULTS FOR 2025-2026			
QUARTER	MEMBER GROWTH NET GOAL	MEMBER GROWTH ACTUAL	DROPPED MEMBERS ACTUAL (including transfers)
JULY/AUG/SEPT	20	26	22
OCT/NOV/DEC	15	15	24
JAN/FEB/MAR	10	36	18
APR/MAY/JUNE	15	0	0

GOALS AND ACTUAL NEW CLUBS CUMULATIVE



GOALS AND ACTUAL MEMBERS CUMULATIVE



DROPPED CLUBS: 0

18 CLUBS OF 40 ADDED 1 OR MORE NEW MEMBERS

GENDER DISTRIBUTION

MALE 640 (61.96%)  
FEMALE 393 (38.04%)

DROPPED MEMBERS

DECEASED	10
CLUB CANCELLED	0
OTHER	53
<b>TOTAL</b>	<b>63</b>

[CLICK HERE FOR CUMULATIVE MEMBERSHIP DATA](#)

TOTAL FAMILY UNIT MEMBERS	171
FAMILY MEMBERS PAYING HALF DUES	86